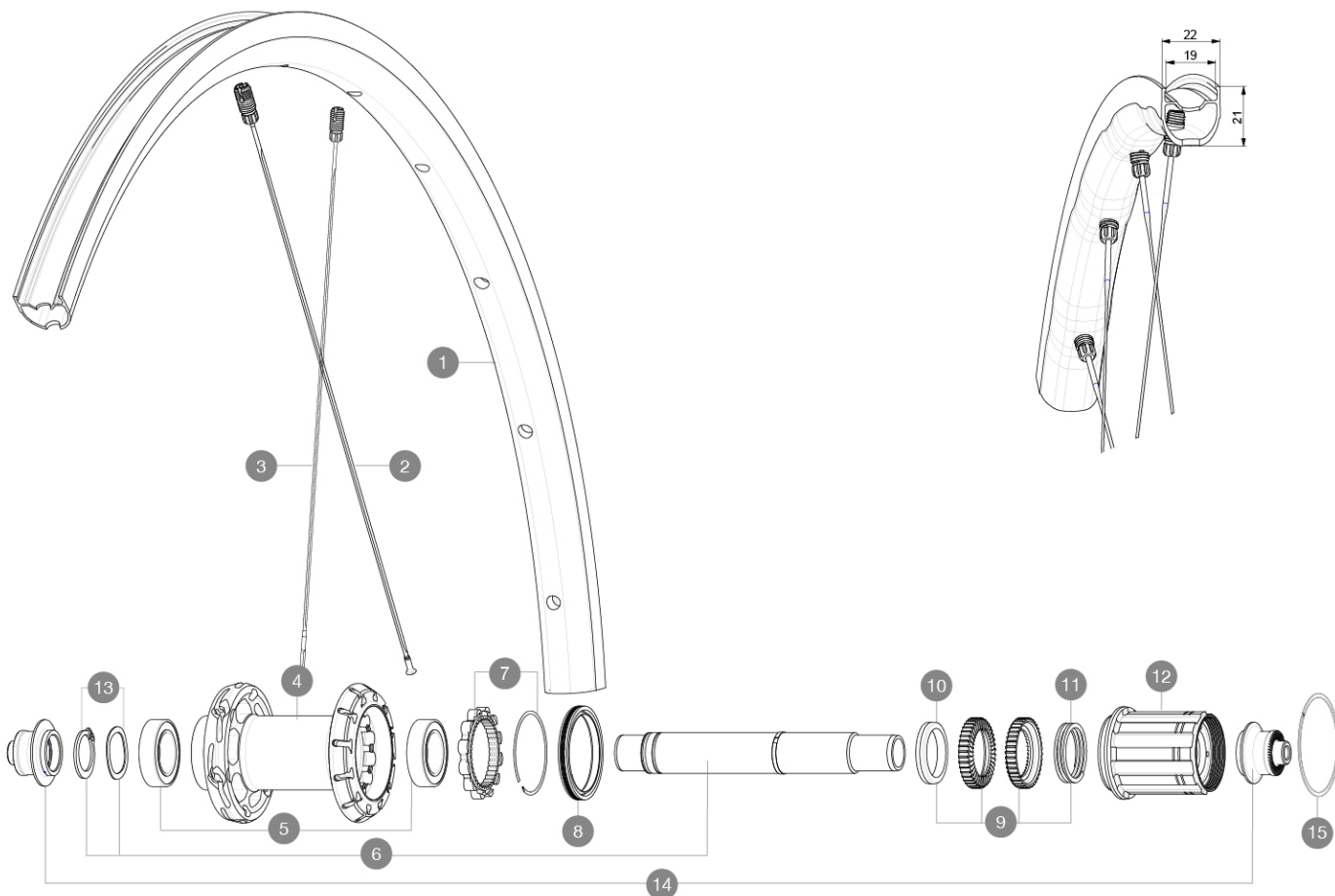


ASTM CATEGORY 2 : road and offroad with jumps less than 15cm
 For a longer longevity of the wheel, Mavic recommends that the total weight supported by the wheels doesn't exceed 120kg, bike included
 Recommended tyre sizes: 25 to 32 mm
 Max. Pressure: see indication on wheel and tyre. If they differ, use the lowest of the 2

REFERENCES WHEELS

R36721 Ksyrium S Rr



RIMS



&NBSP;:

1 V4093813 Kit Rear rim Ksyrium S RB

SPOKES

2 V4163901 Kit 12 rear Ksyrium S DS butted spoke 278mm M7/7
 3 V4163801 Kit 12 rear Ksyrium S NDS butted spoke 297mm M7/7

HUB SHELLS

4	N/A	HUB BODY
5	V2560401	KIT 2 BEARINGS 17x28x7 + WAVED WASHER + CLIP
6	V2252801	KIT ID360 UB REAR AXLE W/CLIP/WAVED WASHER
7	V2252701	KIT ID360 INSERT SHAPED EAR LOBE > 2017
8	V2251601	KIT ID360 SEAL + GREASE
9	V2251701	KIT ID360 2 RATCHETS + SPRING + GREASE
10	V2500501	KIT ID360 3 PADS NOISE REDUCING
11	V2251801	KIT 3 ID360 ROAD SPRINGS
12	V3430101	HG11 Freewheel Body ID360
13	V2560501	KIT ADJUST. SYSTEM QRM AUTO ID360 for 17x28x7 bearing
14	V2253101	KIT REAR AXLE ADAPTOR QUICK RELEASE ID360
15	V2252201	KIT 2 REAR HUB RETENTION RINGS 48mm

MAVIC Ksyrium S

DELIVERED WITH

BR601 quick releases (V24 501 01 frt, V24 502 01 rear)	
UST valve and accessories (129 838 01)	
User guide	

COMPATIBILITY

Freewheel: Shimano/Sram, convertible to Campagnolo and XD-R with optional driver bodies	
Front axle: Quick Release only	
Rear axle: Quick Release only	

Specifications

RIMS

- **Material** : Mxstal
- **Height** : 22 mm
- **Brake track** : UB Control
- **Tire** : UST Tubeless and tubetype
- **Internal width** : 19 mm
- **ETRTO size** : 622x19TC Road

Fore
UST
SUP

SPOKES

- **Material** : steel
 - **Shape** : straight pull, flat, double butted
 - **Nipples** : Fore integrated aluminum
 - **Count** : 24 front and rear
 - **Lacing** : front radial, rear Isopulse
- Isopulse

WHEEL HUB

- **Front and rear bodies** : aluminum
 - **Axle material** : aluminum
- Infinity Hub
Instant Drive 360
QRM Auto

VERSIONS

- **Freewheel** : Shimano/Sram

WHEEL WEIGHTS

895